

NAM Controller

Description: NAM Controller Software
Autor: Maximilian Ziegler
Co-AutorIn: -

Titel:	NAM Controller	Filename:	NAM Controller instruction manual_V1.9.odt
Version:	1.0	Date:	01.04.11
State:	released	Page:	1/11

Inhalt

1	VERSION HISTORY.....	3
2	INFORMATION.....	4
2.1	About this document.....	4
2.2	Impressum eibus GmbH.....	4
3	VORAUSSETZUNGEN.....	5
4	START WIZARD.....	6
4.1	Start a new test.....	6
4.2	Edit an existing project.....	7
5	HOW TO USE THE NAM – CONTROLLER SOFTWARE.....	8
5.1	Search for NAMs/MAMs and HCUs.....	9
5.2	Add a channel to a test.....	9
5.3	Delete a channel.....	9
5.4	How to build a graph.....	9
5.4.1	To add a point.....	9
5.4.2	To move a point.....	9
5.4.3	Clear a point.....	9
5.4.4	Clear a graph.....	9
5.4.5	Start now.....	11
5.4.6	endless.....	11
5.4.7	Start in	11
5.4.8	Lenght.....	11
5.4.9	Start.....	11
5.5	State.....	11

Titel:	NAM Controller	Filename:	NAM Controller instruction manual_V1.9.odt
Version:	1.0	Date:	01.04.11
State:	released	Page:	2/11

1 VERSION HISTORY

Version	Date	Changes
1.X < 6	23. 6. 2006	<ul style="list-style-type: none"> • Stable version • Supporting NAM2, NAM19, HCU5 (handled like a NAM19) as well as MAMs with a network module
1.7	24.7.2007	<ul style="list-style-type: none"> • Status bar while generating improved • Upgraded performance in relation to the graphic, that means no flashing while the status bar is running • Minimum testlength moved from 60 to 15 seconds (Warning! NAM2, NAM19 requires at least a 1.7 version)
1.8	17. 7. 2006	<ul style="list-style-type: none"> • Complete throughrunning status bar at reduced Broadcasts (NAM firmware at least Versionen 1.7) • Supporting NAM4 • Differentiation between NAM19 and HCU (HCU firmware at least Version 1.8)

Titel:	NAM Controller	Filename:	NAM Controller instruction manual_V1.9.odt
Version:	1.0	Date:	01.04.11
State:	released	Page:	3/11

2 INFORMATION

2.1 About this document

This manual description is for the NAM Controller Software. It tells you how to control a NAMx, MAM or HCU 5 with this software. This document relates to functionality of the current software Version. (have a look to point 1. version history)

All rights at this instruction manual are entitled to **eubus**.

This instruction manual is designed for users of the NAM (Network Attenuator Module) 2, NAM19, NAM4, HCU5 and MAM with integrated networkmodule.

The copying and distribution are not permitted but for the internal use.

2.2 Impressum eubus GmbH

eubus GmbH
Munich trade court, staircase E/4th OG
Gollierstrasse 70
D - 80339 Munich
Telephone ++ 49 (0)89 540 32 733
www.eubus.net
sales@eubus.net

Titel:	NAM Controller	Filename:	NAM Controller instruction manual_V1.9.odt
Version:	1.0	Date:	01.04.11
State:	released	Page:	4/11

3 SYSTEM REQUIREMENTS

System requierments:

CPU: > 1GHz
RAM: > 256 MB
OS: Windows XP (Home, Professional)
HDD: at least 100MB Harddisk memory
Grafik: display resolution > 1024 x 768 Pixel
additional: Ethernet Networkdevice

The communication between software and a NAM, HCU5 runs over ethernet. It uses the IPv4 UDP protocol over the networkport 3000. That means be sure that the traffic in both ways isn't blocked by a firewaill (software or hardware). Attend, that a UDP Broadcast paket (destination host: 255.255.255.255) on port 3000 will be send when the software is scanning the network for devices.

Titel:	NAM Controller	Filename:	NAM Controller instruction manual_V1.9.odt
Version:	1.0	Date:	01.04.11
State:	released	Page:	5/11

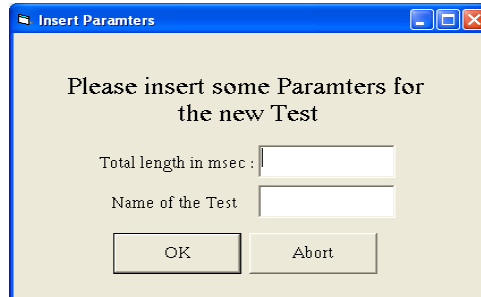
4 START WIZARD

After starting the software you will see the “Start-up Wizard”. Here you have three possibilities:



4.1 Start a new test

To generate a new Testscenario you have to choose „Start a new Test“:



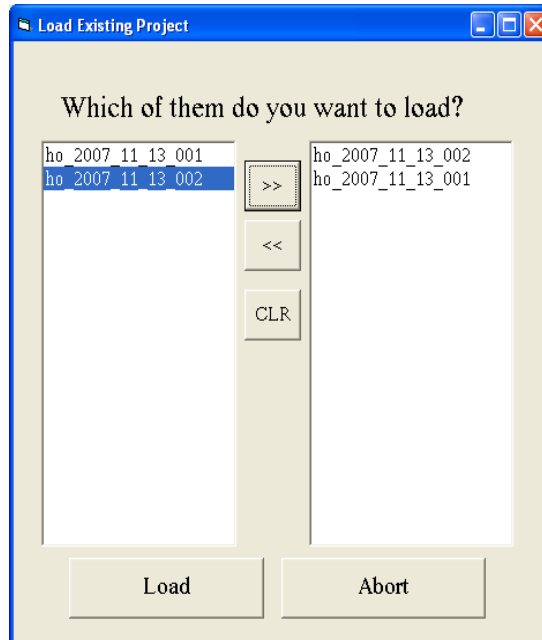
Please enter the test length („Total length in msec“) in milliseconds. The test length minimum is 15 000 milliseconds. And the maximum Testlenght is 999999999 milliseconds. Do you need more than this period? Please contact us (watch out point 2.1 Impressum)

In the text box „Name of the Test“ you can enter a name for the test.

Titel:	NAM Controller	Filename:	NAM Controller instruction manual_V1.9.odt
Version:	1.0	Date:	01.04.11
State:	released	Page:	6/11

4.2 Edit an existing project

The MS Windows “Open” dialog appears and you’re able to specify a nam-config-file (*.cfg). After selecting a *.cfg the following window appears:



In the left box you can see all in this project available tests. To load them tag them and press the „>>“ button. You can choose one or more test, but be careful, if you are going to save them under the same project name, the project file (*.cfg) will be deleted and generated new. CLR clears the list of selected tests. With load the selected test will be loaded.

Titel:	NAM Controller	Filename:	NAM Controller instruction manual_V1.9.odt
Version:	1.0	Date:	01.04.11
State:	released	Page:	7/11

5 HOW TO USE THE NAM – CONTROLLER SOFTWARE

The screenshot shows the NAM - Controller v 1.8 software interface. The window title is "NAM - Controller v 1.8" and the system tray shows "EUBUS GmbH". The interface includes a "Data Info" section with "Testname" (ho_2007_11_13_001) and "Process ID" (01). Below this are "Generate", "Start", "Pause", and "Stop" buttons. A central grid displays "Example graphs" with colored lines and nodes. On the left, a "Selection" list shows IP addresses and device types (e.g., HCU 5 RS24, HCU 5 RSS3, HCU 5 RSS2, HCU 5 RSS1). Below it is a "Delete" button. Further down is a "Search / Select" section with a search box and a list of available devices (e.g., HCU 5, NAM4) with their IP addresses and channels. A "Status bar" at the bottom left shows "Time(msec): 3240" and "Attenuation(db): 120". A "Status bar" at the bottom right shows "Shows the actual Mouse pos.". A "Status ticker" is located in the center of the grid. A "Searchbox" callout points to the search section, stating "Here are the devices, which are in this network available". A "Selectionbox" callout points to the selection list, stating "Here are the test relevant devices".

Titel:	NAM Controller	Filename:	NAM Controller instruction manual_V1.9.odt
Version:	1.0	Date:	01.04.11
State:	released	Page:	8/11

5.1 Search for NAMs/MAMs and HCUs

This function searches for NAM (19 / 2 / 4) and MAM in the network and lists them in the **Searchbox** in the button left corner of the window .

5.2 Add a channel to a test

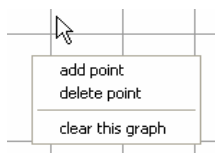
With **Add** you can transfer selected devices from the **Searchbox** to the **Selectionbox** left up. Within this window in you're able to work with this device (build graphs).

5.3 Delete a channel

“Delete” releases tagged devices from the selection box.

5.4 How to build a graph

You have to tag a device in the **Selectionbox** and move the mouse to the **Graphic**. Now click the right mouse button to get this menu:



5.4.1 To add a point

Add point: adds one point at the mouse position to the graph which is tagged in the **Selectionbox**.

5.4.2 To move a point

To move a point of a graph, you have to tag a device in the **Selectionbox**. Then move the mouse over a point of the tagged graph and click the left mouse button. Now the point is selected and follows the mouse movement. Move it to the desired destination and click the left mouse button again to place it at the new position.

5.4.3 Clear a point

Delete point: deletes one point near to the mouse position of the graph which is tagged in the **Selectionbox**.

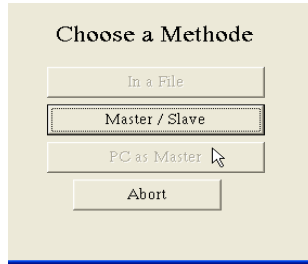
5.4.4 Clear a graph

Clear this graph: deletes the whole tagged (Selectionbox) graph. Preparing to start a test

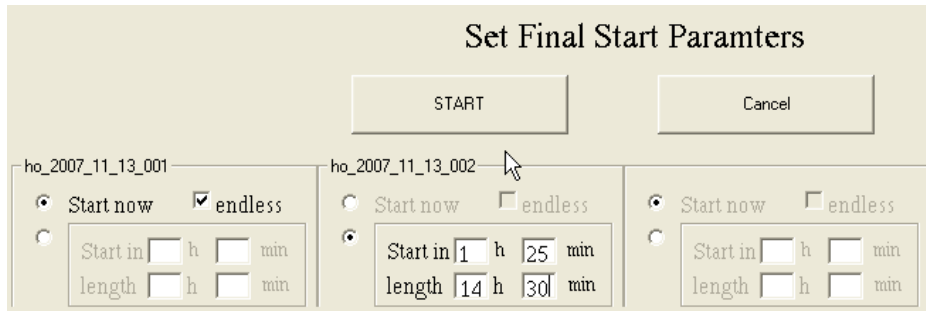
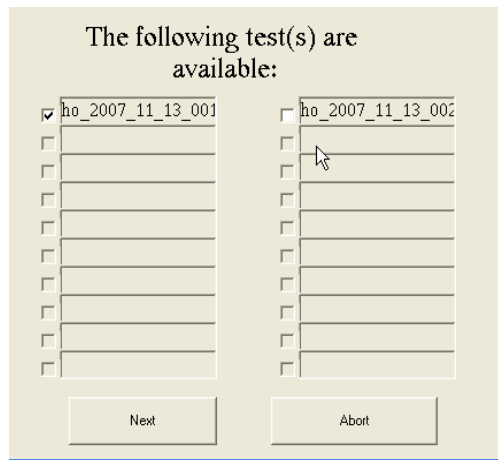
Before you can start a test you have to **Generate** a test, that means to prepare the NAMs and MAMs (with networkmodule) for the test. In the version 1.4 there is only the possibility to

Titel:	NAM Controller	Filename:	NAM Controller instruction manual_V1.9.odt
Version:	1.0	Date:	01.04.11
State:	released	Page:	9/11

choose the Master / Slave Method. This means, your test runs standalone (without PC or network connection).



You have the possibility to check each test, which is already generated! Then push **Next**.



Titel:	NAM Controller	Filename:	NAM Controller instruction manual_V1.9.odt
Version:	1.0	Date:	01.04.11
State:	released	Page:	10/11

5.4.5 Start now

Test starts after pushing the **Start** button.

5.4.6 endless

The test runs until the **Stop** button has been pressed.

5.4.7 Start in

You can enter in how many hrs. and minutes the test should start .

5.4.8 Length

Here can you enter how long the test should take.

5.4.9 Start

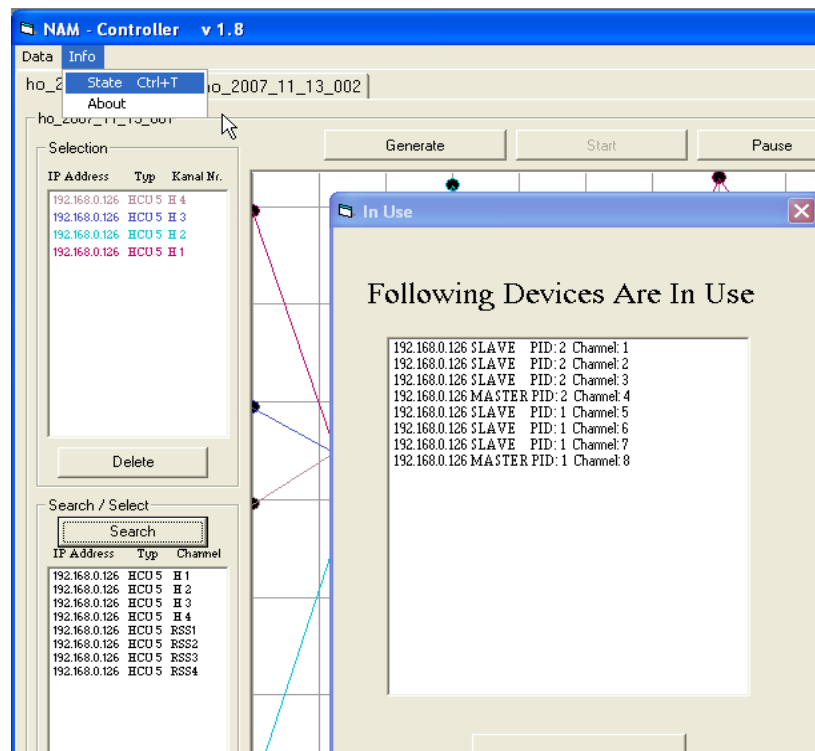
The test(s) finally starts.

Be careful that you don't use the same device in more than one test!

(You only get a hint if you add a device which is already in use in an alter test)

5.5 State

Mit „State“ kann man eine Übersicht über alle im Netz erreichbaren Geräte bekommen.



Titel:	NAM Controller	Filename:	NAM Controller instruction manual_V1.9.odt
Version:	1.0	Date:	01.04.11
State:	released	Page:	11/11